

Data and facts

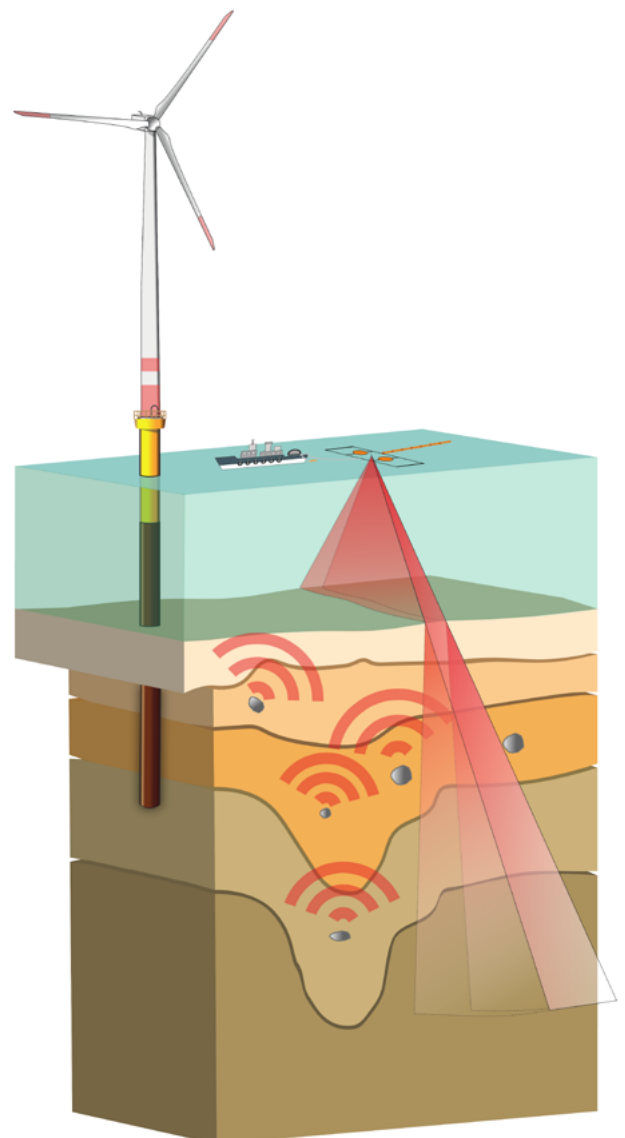
Sub-seafloor Object Detection

During the construction of offshore infrastructure like e.g. offshore wind turbines, boulders and other geological features (shallow gas accumulations, cohesive strata) may pose a risk to the installation. In particular, boulders in the sediment can cause damage to the driven piles during installation of the support structures. Potential termination of installation and extended delays can result in high costs for wind farm developers. Accurate knowledge of the sub-seafloor geology (e.g., position of boulders in the sub-seafloor) allows for efficient, small-scale micro-siting of the foundations, thus minimizing the installation risks.

Fraunhofer IWES and the University of Bremen developed a novel data acquisition system specifically for the purpose of diffraction imaging and the localization of point diffractors (e.g., boulders) within marine sediments. The specially designed acquisition geometry of the system, together with synthetic aperture processing, allows blanket coverage of the survey area, resulting in excellent overall data coverage as well as time- and cost-efficient survey operations.

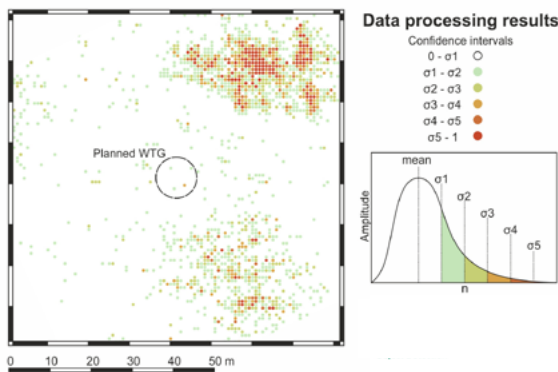
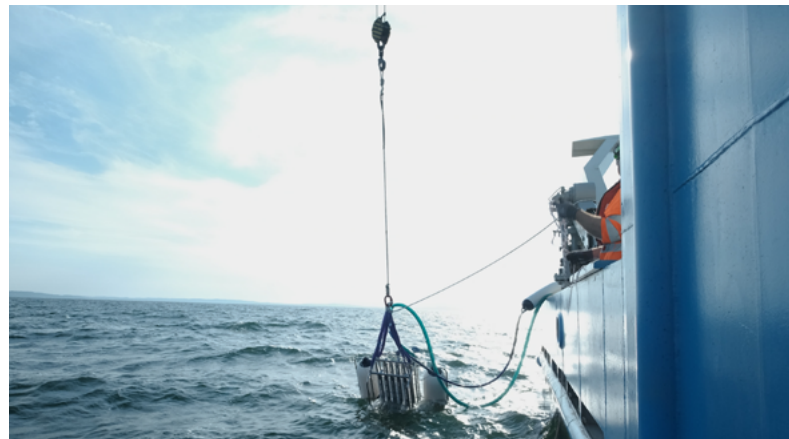
Our competences at a glance

- Dedicated diffraction imaging for sub-seafloor object detection
- Identification and localization of targets > 0.5 m up to full foundation depth
- Swath imaging for time- and cost-efficient survey operations
- Simultaneous UHR reflection survey

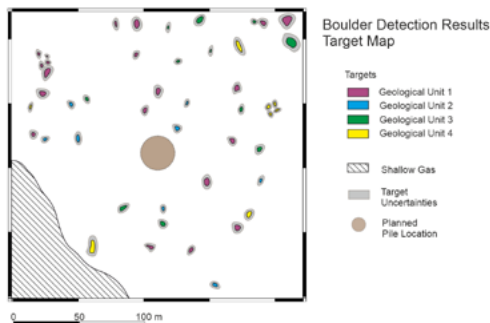


Services

- Fit-for-purpose risk assessment for offshore foundation planning
- Identification and localization of targets > 0.5 m size
- Full depth imaging for comprehensive risk assessment of total foundation depth (min. 2x water depth)
- Tailored data acquisition and processing for sub-seafloor diffraction imaging
 - Diffraction imaging for object detection
 - Swath imaging for time-efficient surveying
 - High localization accuracy with synthetic aperture processing
- Specialized processing algorithms for diffraction imaging including reflection-diffraction separation and beamforming
- 3D diffraction energy volume generation used for interpretation
- Detailed anomaly interpretation and integration into geological model for micro-siting
- Simultaneous acquisition of UHR reflection seismic data optimized for structural/stratigraphic imaging
- Ongoing research and development for optimized efficiency and custom solutions



Statistical evaluation of diffraction amplitudes for anomaly recognition



Integrated target interpretation with local geology for foundation micro-siting

Further information

Fraunhofer IWES secures investments in technological developments through validation, shortens innovation cycles, accelerates certification procedures, and increases planning accuracy by means of innovative measurement methods in the wind energy and hydrogen technology sectors. At present, there are more than 300 scientists and employees as well as more than 100 students employed at the nine sites: Bochum, Bremen, Bremerhaven, Leer, Görlitz, Hamburg, Hannover, Leuna, and Oldenburg.

Supported by:



on the basis of a decision by the German Bundestag

Contact

Gino Frielinghaus
 Head of Department
 Sub-surface Investigations
 Phone: +49 471 14290-174
 gino.frielinghaus@iwes.fraunhofer.de

Viola Bihler
 Group Manager
 Unconventional
 Geophysical Imaging
 Phone: +49 471 14290-130
 viola.bihler@iwes.fraunhofer.de

Fraunhofer Institute for Wind Energy Systems IWES
 Am Fallturm 1, 28359 Bremen, Germany
 www.iwes.fraunhofer.de